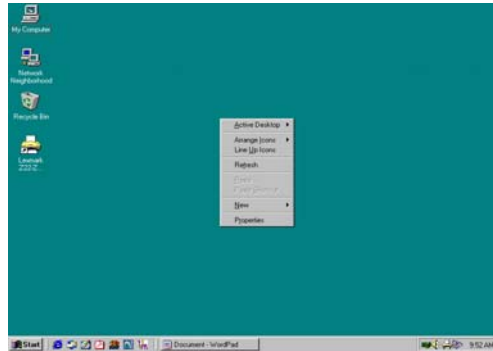


Changing the Display – COLOR

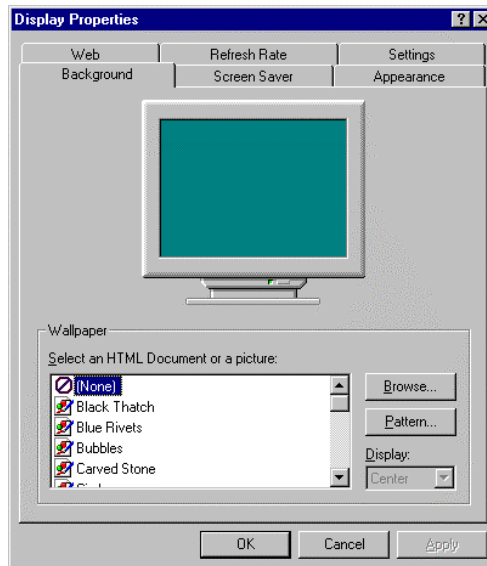
1. Click the **RIGHT** mouse button from anywhere on the desktop. Click on **PROPERTIES**.

OR

1. Select **START → SETTINGS → CONTROL PANEL** (then Double-Click on the **Display** icon)



2. Click the **SETTINGS** tab to view display settings.



3. Click the Drop-down menu under Color palette. Select **256 Color**.
4. Click OK
5. Click OK
6. Click Yes.

