

# SpringBoard™ Demo Software Quick Reference

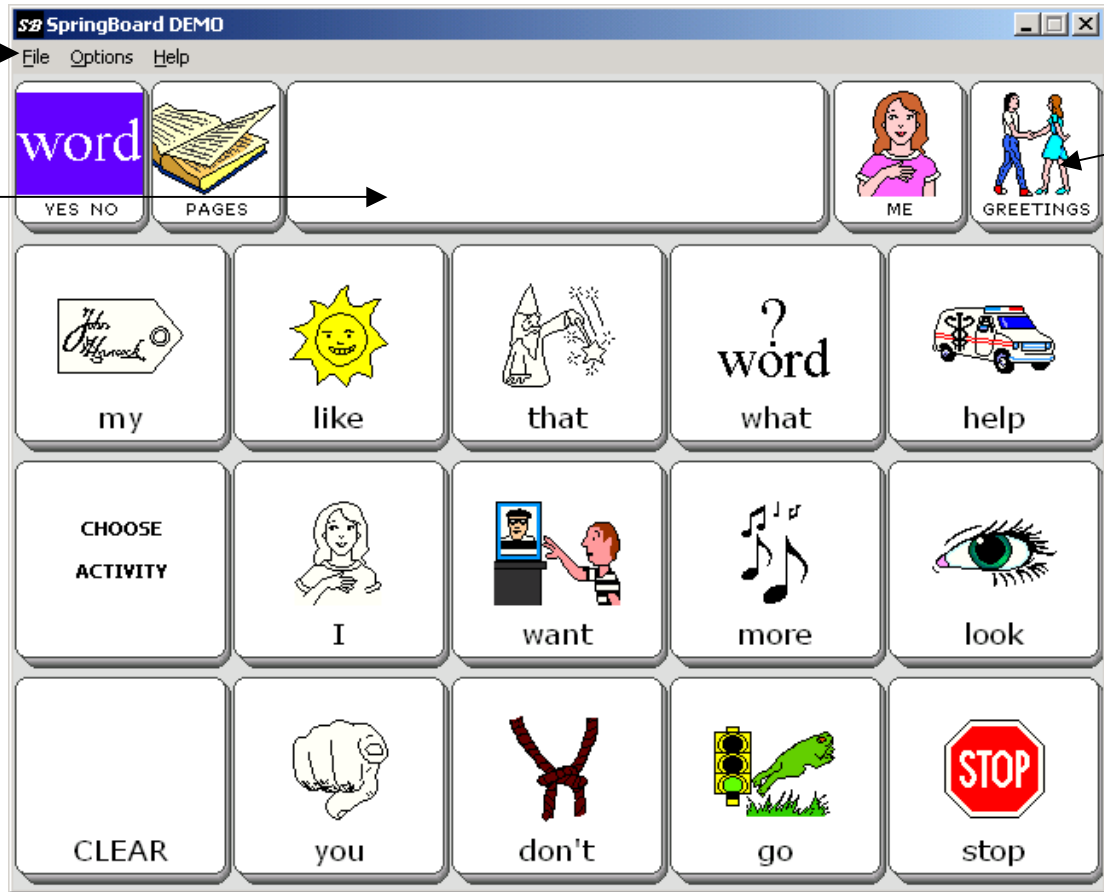
The SpringBoard software demonstration (emulator) allows you to experience many of the capabilities of the device on a Windows®-based PC. This Quick Reference will walk you through the steps to successfully explore our demo software. If you need assistance, call PRC Service at (800) 262-1990.

The first screen you see is a new feature of the SpringBoard software called the Exploration Wizard. This feature lets you explore targeting, picture recognition, associations, and vocabulary options. To begin your tour of this demo software, select the “15 LOC” key and explore the vocabulary. To return to the Exploration Wizard at any time, go to the Toolbox, select the “Choose Overlay Menu,” then select “Switch User Area,” choose “Exploration Wizard” and press the OK key twice.



These are "File," "Options" and "Help" menus that function on the emulator in a manner similar to other Windows programs.

Text Display Area: Where any text appears.



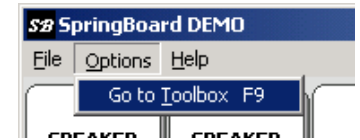
Activities

Dynamic keys.

- Core vocabulary is stored here.
- Options in # of keys: 4, 8, 15, or 32 key locations.

## TOOLBOX OPERATION

Open the on-screen Toolbox by selecting “Go to Toolbox: in the Options menu. There are 33 KEYS in the Toolbox. Menus in the Toolbox are arranged in order based on what you want to do, i.e., all the tools for working with pages are grouped together, with a few exceptions. The bottom two rows contain menus for personalizing the hardware to fit the user’s needs as well as the navigation tools for MINSPEAK and OK. All menus function in a similar manner. On your Windows toolbar, select OPTIONS and then GO TO TOOLBOX. (Selecting F9 on your computer keyboard will also get you into the Toolbox.) Select OK or GO TO MINSPEAK to exit the Toolbox.



## BRIEF DESCRIPTION OF FREQUENTLY USED MENUS IN THE TOOLBOX

**DYNAMIC ACTIVITY MENU** allows the creation and customization of activities for the Activity Row.

**CHOOSE OVERLAY MENU** is used to move among the six user areas and to change the number of key locations on the static key area. Different vocabularies can be stored in the six user areas.

**FEEDBACK MENU** offers adjustment visual and auditory properties, such as brightness, text size, and activation feedback.

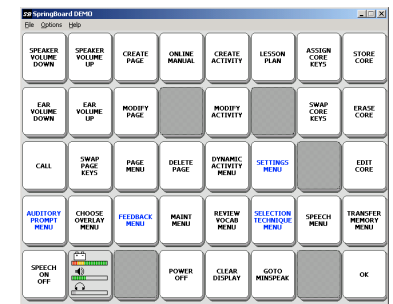
**REVIEW VOCABULARY MENU** is used to review vocabulary stored in the SpringBoard.

**SELECTION TECHNIQUE MENU** offers a variety of access options, plus fine-tuning for the selection technique in use.

**STORE CORE MENU** is used to add customized vocabulary to the core vocabulary located in the static key area.

**TRANSFER MEMORY MENU** allows you to save or load vocabulary. We also import pictures or graphics using this menu.

**LESSON PLANS** give you teaching ideas for the different vocabularies available in SpringBoard.



## SPRINGBOARD VOCABULARIES

The SpringBoard includes a comprehensive set of Unity® vocabularies that are designed to provide smooth transitions as the ability of the user increases. The included Unity vocabularies are described in the following chart:

Unity	No. of Locations	Vocabulary	Vocabulary Formats
Unity /SB	4	4; plus additional vocabulary in the Activity Row	Dynamic core vocabulary; Activity Row; Pages
Unity /SB	8	8; plus additional vocabulary in the Activity Row	Dynamic core vocabulary; Activity Row; Pages
Unity /SB	15	15; plus additional vocabulary in the Activity Row	Dynamic core vocabulary; Activity Row; Pages
Unity /SB	32	32; plus additional vocabulary in the Activity Row	Dynamic core vocabulary; Activity Row; Pages

## TO CHANGE USER AREAS

1. Open the on-screen Toolbox by selecting "Go to Toolbox" under Options.
2. Select CHOOSE OVERLAY MENU.
3. Select SWITCH USER AREA
4. Select the User Area to switch to
5. The device takes you back to the Overlay Menu screen
6. Once you have the number of the user area you want (showing in the box at the top of your screen), press OK at the bottom of the screen.
7. The first screen that appears when you press OK will be the toolbox page. You can press OK again or GO TO MINSPEAK (near the bottom right corner).

---

---

## **CHANGING VOCABULARY**

### ***EDIT CORE***

1. Go to the on-screen Toolbox.
2. Activate EDIT CORE.
3. Select icon sequence to edit. Select OK.
4. Follow Storing steps, you must re-record it.

### ***ERASING***

1. Open the on-screen Toolbox.
2. Select ERASE CORE.
3. Select icon sequence to erase.
4. Select OK.
5. Select YES or NO to erase

## **CREATE A NEW ACTIVITY**

1. Open the on-screen Toolbox.
2. Select CREATE ACTIVITY.
3. Spell the name of your new activity.
4. Select OK.
5. Select an icon for the activity from on the categories.
6. The first key of your activity will be highlighted. Spell any text you want on the display. Add a space at the end. Select OK.
7. RECORD any message.
8. Choose an icon from the icon categories under the CHANGE ICON key.
9. Change the icon label if you want. A label can have up to 9 letters. For a blank label, type a space, no words. Select OK.
10. Change the color of the key if you want.
11. Activate the next key in the activity that you want to define and repeat these steps.
12. When you have finished designing your new activity, select the OK key.

If you make a mistake, activate CLEAR KEY CONTENTS and start over

---

---

## **HIDE OR SHOW AN ACTIVITY**

If you want to decrease the number of activities available in the Activity Row you can choose to hide them and show them at another time.

1. Open the on-screen Toolbox.
2. Select MODIFY ACTIVITY.
3. Select the activity to modify (you may need to select MORE ITEMS to locate it)
4. Select HIDE button on the right side of screen.
5. Select OK.
6. To SHOW an activity.
7. Select an activity that is dark.
8. Select SHOW button on the right side of the screen.
9. Select OK

## **MODIFY AN ACTIVITY**

1. Go to the on-screen Toolbox.
2. Activate MODIFY ACTIVITY.
3. Select the Activity to Modify. The Activity is then highlighted.
4. Select Modify Item Within Activity.
5. You can: change the icon, label or contents of the main activity; change its position in the row; hide or show the Activity; or delete the entire Activity. Select OK when you are finished.



**PRC**

Prentke Romich Company

*Communication without limitations*

---

---

## **CREATING A PAGE**

1. Open the on-screen Toolbox.
2. Select CREATE PAGE.
3. Spell name for new page.
4. Select OK.
5. Choose keyboard size of new page or choose "Copy from an existing page."
6. Select OK.
7. Choose key to define.
8. Select CHANGE ICON.
9. Select icon from categories to represent the text.
10. Select SPELL TEXT FOR MESSAGE and RECORD your message. Use INSERT TOOL if you want to add a tool to the key.
11. Select CHANGE LABEL.
12. Type the new label name.
13. Select OK.
14. Select **CHOOSE NEXT KEY TO DEFINE**. (If you select OK and return to the toolbox, you must choose Modify Page to get back to the page you were working on.)
15. Continue with steps 7 - 14 above to add vocabulary to your page.
16. Select OK when finished with your page.

SpringBoard is a trademark of Prentke Romich Company · Minspeak and Unity are registered trademarks of Semantic Compactions Systems · Windows is a registered trademark of Microsoft Corporation

02/19/03