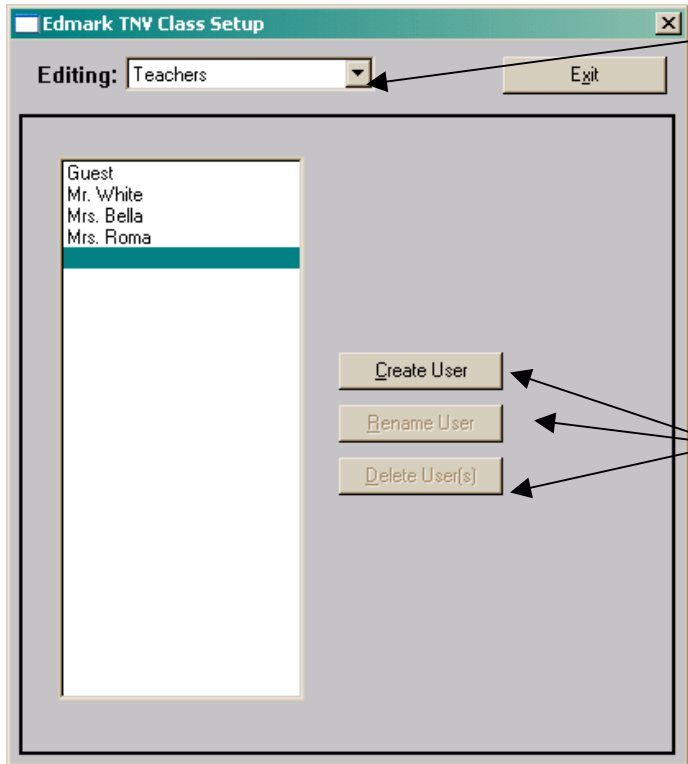


Sammy's Science House

Teacher Management

Double-click on the Sammy's Science House Class Setup icon.
Here you will enter your teacher name and your student names.



The screenshot shows a window titled "Edmark TNV Class Setup" with a close button (X) in the top right corner. Below the title bar, there is a label "Editing:" followed by a dropdown menu currently set to "Teachers" and an "Exit" button. The main area of the window is divided into two sections. On the left is a list box containing the following text: "Guest", "Mr. White", "Mrs. Bella", and "Mrs. Roma". The "Mrs. Roma" entry is highlighted with a blue background. On the right side of the main area are three buttons: "Create User", "Rename User", and "Delete User(s)".

1. Click here to select **Teacher** for entering teacher names and **Student** for entering student names.

2. Click here to **Create User** (Teachers and Students), **Rename User**, or **Delete User**.

Run The Program

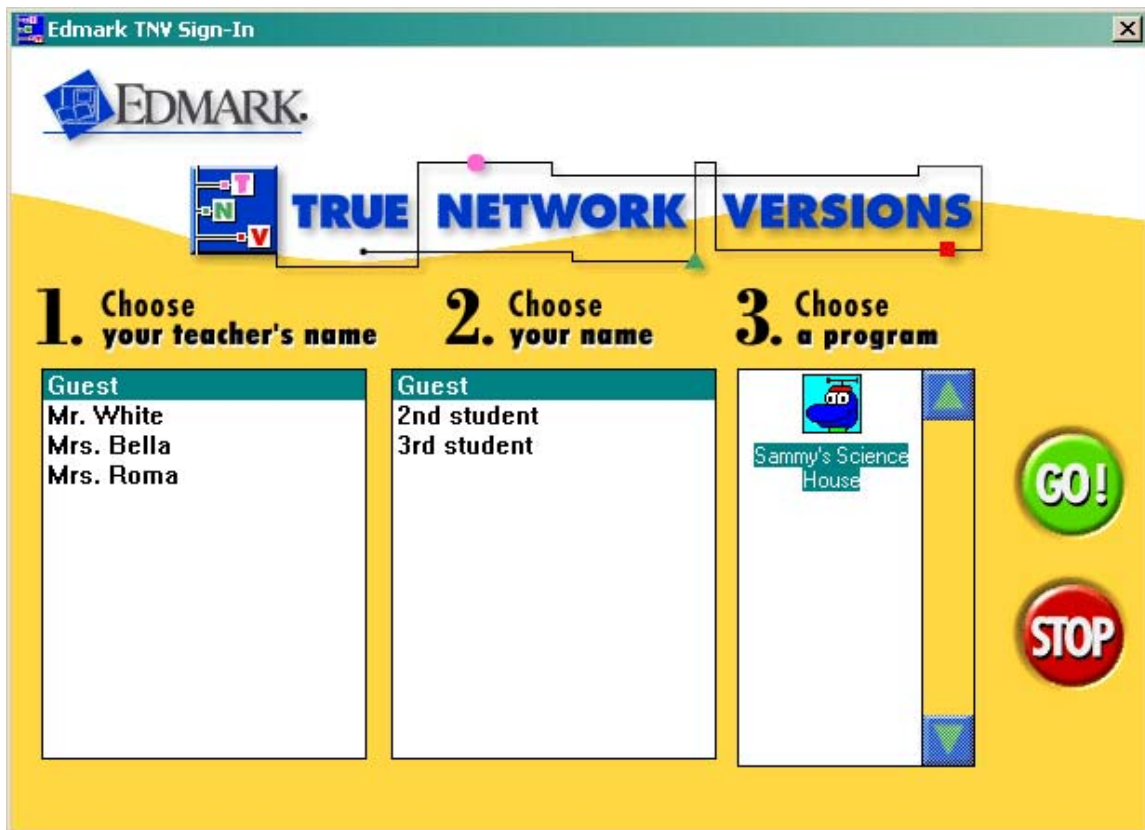
Double-Click on the Sammy's Science House Program Icon to launch the program.

Click on the Teacher's Name

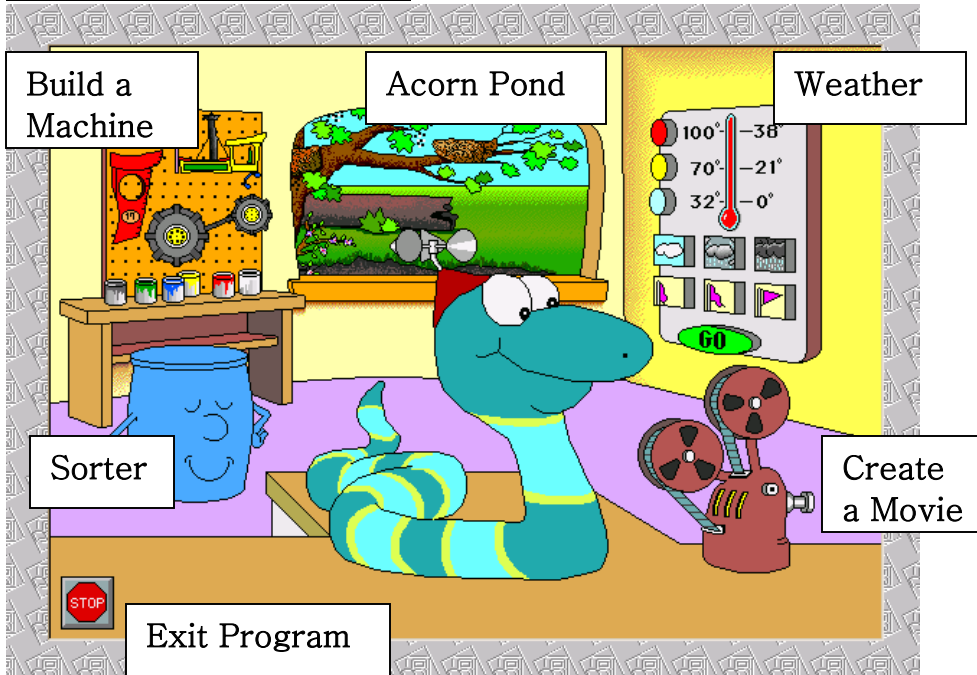
Click on the Student's Name

Click on the Sammy's Science House icon.

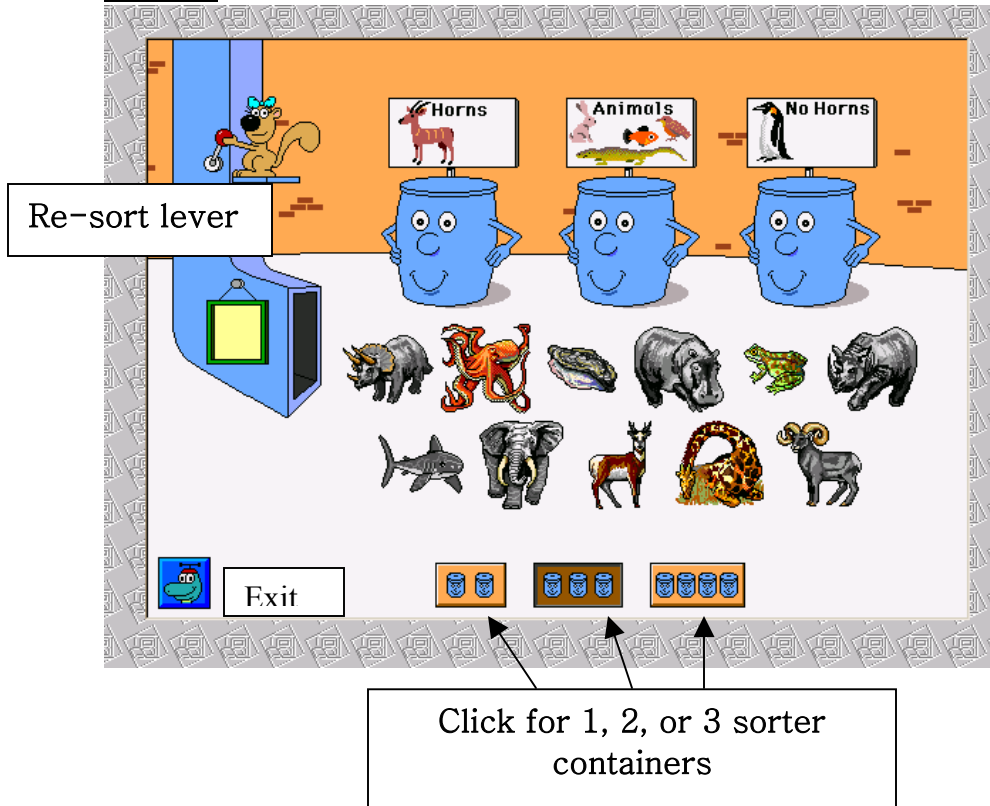
Click GO!



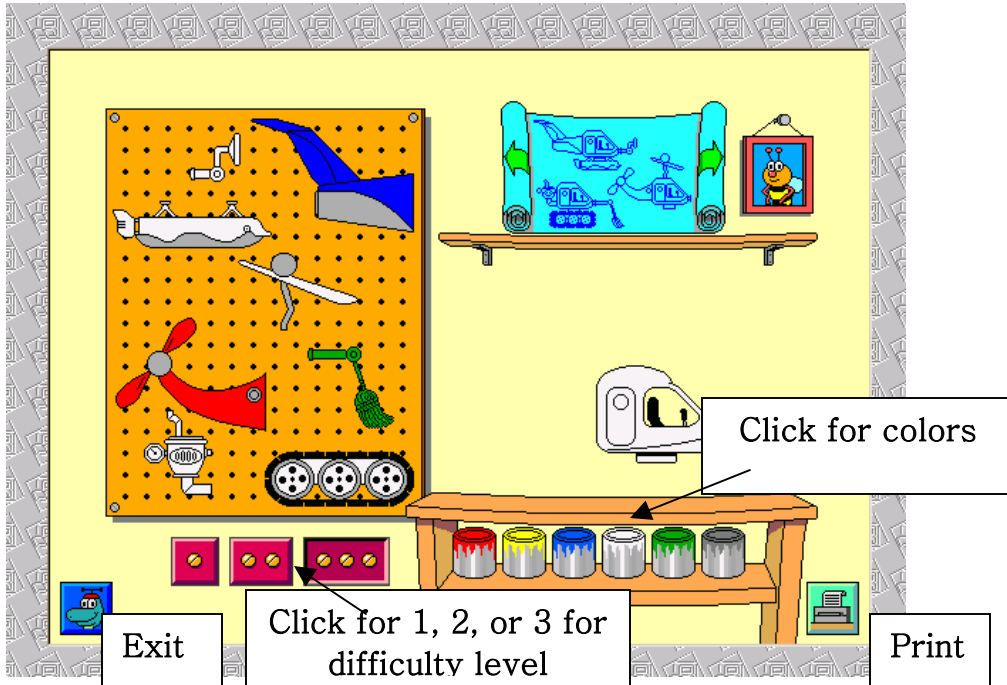
Program Main Window



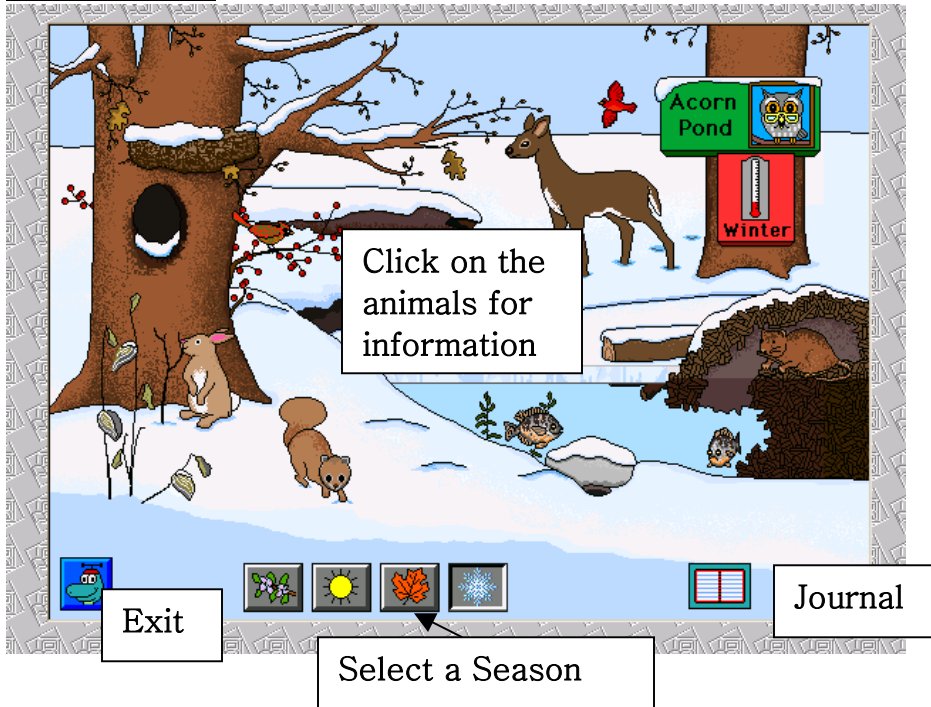
Sorter



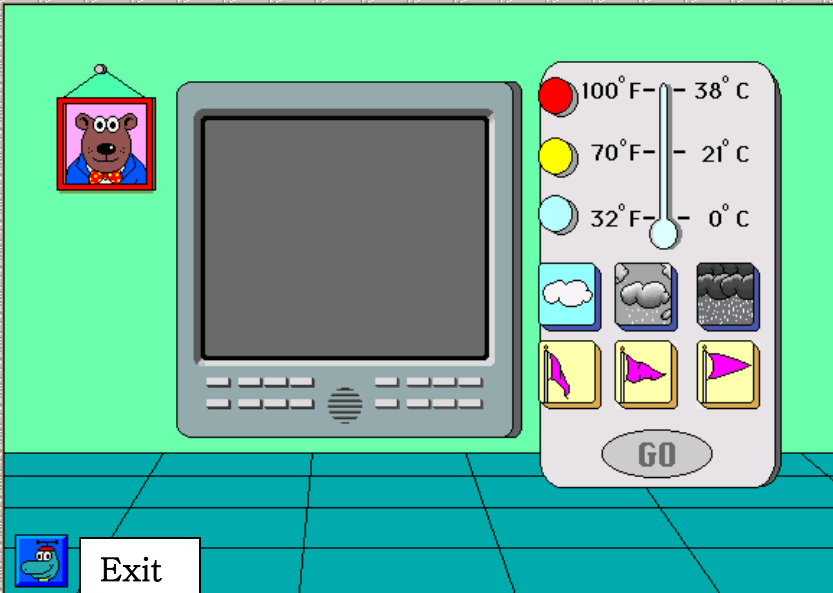
Build a Machine



Acorn Pond



Weather



The interface features a central television set on a green wall. To the left is a framed picture of a bear. To the right is a weather control panel with a thermometer and various icons for temperature, weather conditions, and wind levels. A 'GO' button is at the bottom of the panel. An 'Exit' button with a cartoon character icon is in the bottom left corner.

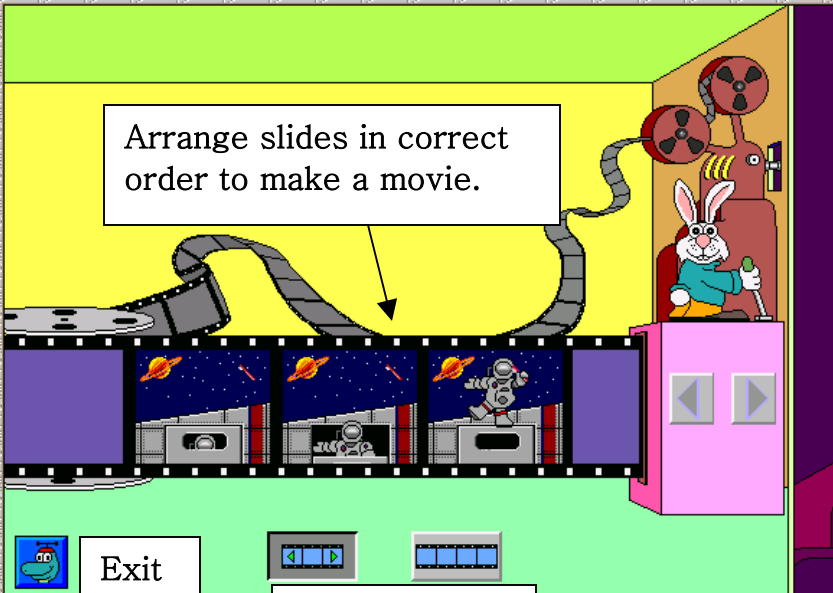
Select a temperature

Select a weather condition

Select the wind level

Exit

Make a Movie



The interface shows a movie-making scene with a rabbit character operating a camera. A film strip is shown with several frames depicting a space scene. A text box instructs the user to arrange slides in the correct order. An 'Exit' button with a cartoon character icon is in the bottom left corner. Navigation buttons for film strips are at the bottom center.

Arrange slides in correct order to make a movie.

Exit

Select 3 or 4 movie slides