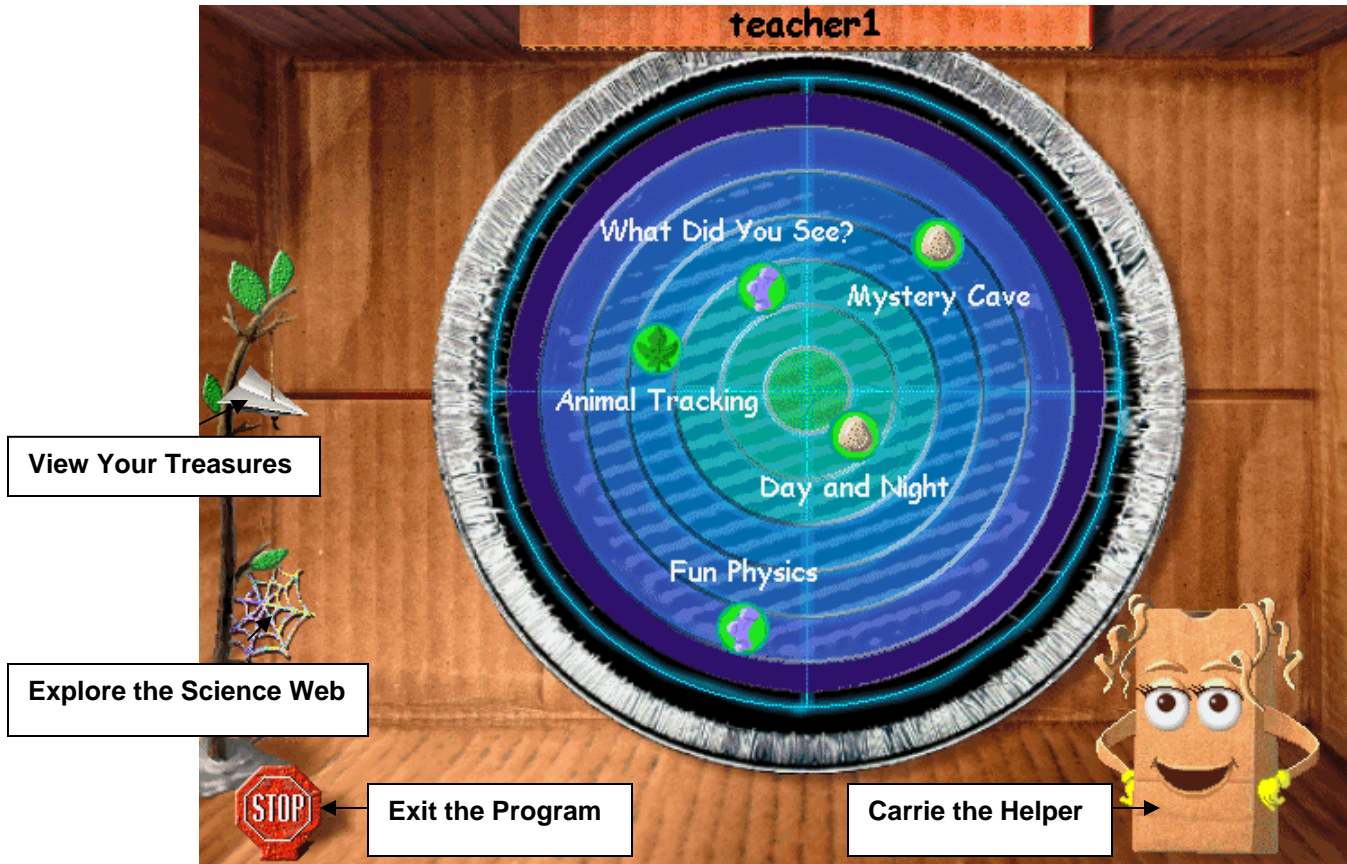


Thinkin' Science Grades 1- 2

Launch the program in the Integrated Curriculum folder. Click in the introduction screen with the mouse to skip the introduction. At the "Top Secret" login screen, enter a name or select from the list of users. Click on **GO**.

The Radar Screen – Main Menu



Learning Environments in Thinkin' Science

Day and Night

student2

View from Earth

View from space

Drag to turn Earth

Turn Earth

Undo last rotation

Check your answer.

GO

Explore

Fun Physics

Guest

Experiment with ramps, catapults, and pendulums

Stop the action and start over

Return to Fun Physics

Start or stop workplace motion

What Did You See?

Send animals to corner of screen

Topic Selection

Science Web Tool

Check your answer

Animal Tracking

Animal Track Tools

Check your answer

Mystery Cave

Answer Choices

Clue Collector

Mystery Cave

Tools

Check your answer

Using the Adult Options

Use the Adult Options to change preference settings, change the Grow Slide settings, and add or remove the User list. To access the Adult Options, hold down the Ctrl and Alt keys while pressing the A key. There is no password.

Preferences Tab: This function is preset in the program installation.

Grow Slides Tab: This function enables teacher to adjust the Grow Slides settings and options. Teachers can monitor a student's progress or set an activity for a student. The slider advances to more challenging activities as a student successfully completes challenges.

Users Tab: This function allows the teacher to remove names from the User List. Students can add their names if a check mark appears in the box titled "Allow New Users to Add Themselves".

