

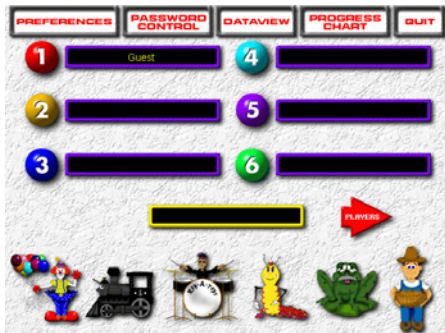


# Earobics

**A CD is required.**

*Note:* The student must always sign on at the same workstation.

**To add a name:** Click a new bullet and it will allow you to add a new name. Press OK. Press OK again.



**To change preferences for a student:** Select the student's name you want to set the preferences for. Select Preferences located on the top menu bar. Enter the password (See your CTA for password). Set the preferences you would like for that selected student.

**To Begin:** The student will select their name. Type in the password (all students have the same password- see your CTA for the password). Click OK and then select a game icon.

*Note:* You can turn off the password control in the Password Control option. Every time a student enters the program he/she will have to enter a generic password that you can get from your CTA if you leave the Password Control set to "On."

**To Pause, Exit or Resume:** While in a game click on the yellow ball to get the Options screen to Pause, Exit or Resume.

**Game Icon choices:**



Karloon's  
Balloons

C.C. Cool  
Car

Rap-A-  
Tap-Tap

Caterpillar  
Connection

Rhyme  
Time

Basket Full  
of Eggs